

Jth
ding

wadawad en POHNPEI



COLLEGE OF MICRONESIA LIBRARY



T 139372

Poc
PN1
93

Am

WADAWAD EN POHNPEI

Kaunopadahr ong MICAL program ni sukuhl en Ohmine.

Edited by Rodrigo Mauricio

First printing - - - - - January 1975

Second printing - - - - - November 1975

Printed by
Media Center
Department of Education
Ponape, Caroline Islands

* I *

WADAWAD EN POHNPEI

Pwuhk wet tepin ntingda sang ni ohpis en MICAL ni January en pahr 1975. Audepe kan ahpw wekidekilahr oh pwurehngehr koasoandi ni November en pahr 1975. Koasoai kan me wia audepen pwuhk wet alahldihsang ni sawas minimin en irail kan me mwarerail kilikilel met: Masao Hadley, Pernet Tihpen, Billidos Albert, Kahpiriel Spenser, Manuel Ladohre, Trihse David, Plasios Opispwo, Salpin Kihleng oh Dr. Paul Hambruch. Se men kalelehki ihr koaros at kalahngan.

Nan pwuhk wet ke pahn wadek koasoai kan oh tamataman wehwehn lepin koasoai me ketihtihki, "Piraki me I pwahpwa." E wia doadoahk apwal ehu en kak alahlidi inen en ekei koasoai kan me audedahr pwuhk wet. Ahpw se koapwoaroapwoarki me wen me mie ansou wet pahn sewese seri kan pwe re en kaihanki wadek pein arail lokaia kan.

Ma komwi me mwahngih inen en koasoai kan de pil ekei koasoai tohrohr, se pahn inenen pereniki ma komw kapidolong ni ohpis en MICAL Ohmine.

WADAWAD EN POHNPEI

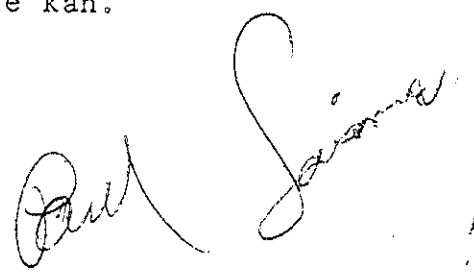
Kaweid Ong Sounpadahk Duwen Doadoahngki Pwuhk wet

Pwe seri kan en kak wia arail pwukoa kan me pahn kin pwarada de idawehn ehu ehu koasoai, uhdahn serio pahn anahne wadek koasoai. Eri iet akan ekei soangen wiepen wadawad me sounpadahk pahn kin tamataman ni ah pahn kin kaweid nah tohnsukuhl kan ong wadek pwuhk wet.

- I. Sounpadahk oh seri kan uhdahn pahn koasoai mahs kilel me mi ni koasoai. Wiahda ekei peidek ong ni kilelo. Seri kan en song sapeng.
- II. Mehnia me mwahueng noumw tohnsukuhl kan.
 - A. Seri pahn pein wadekehng pein ih oh mwuhr e pahn sapeng peidek.
 - B. Serio pahn wadek ngillaud ekis wasa me peidek uhweg ehu lepin lokaia apwal de kapw.
 - C. Riemen pahn naineki ehu pwuhk. Emen pahn wadek ah emen pahn rongete ma e kak wehwehki. Seri kan pahn weliali.
 - D. Kisin pwihn tikitik kak wiahkihte ehu wadawad.
 - E.
 1. Sounpadahk pahn kilelehdi wasa me irail pahn pein wadawad lel ie.
 2. Sounpadahk pahn wia ekei peidek duwen wasa me irail wadekehro.
 3. Sounpadahk pahn idek ehu peidek me pid koasoai ahpw sohte kak dierek nan wasa me irail wadekehr. Met pahn kahrehieng tohnsukuhl ah pahn men pwurehng uhsehla ah wadawado, eri ke pahn pwurala oh kapwurehieng wiepe (1)

Seri koaros SOHTE pahn wiahkihte ehu wadawad laud.

Ansou koaros me tohnsukuhl pahn wadekala ehu koasoai irail pahn kin ale exercise kan oh wiahda. Mwurin met, koaros pah kin koasoai duwen pasapeng kan me irail wiadahr pwe en kak kawehwehda wasa me seri kan sohte wehwehki oh sapwungala ie kan.



WADAWAD EN POHNPEI
AUDEPE

<u>OARALAP</u>	<u>PALI</u>
Likepsino - - - - -	1
Olapahd - - - - -	3
Jack Amusten - - - - -	5
Seikep oh Saperana - - - - -	8
Sakauen Pwallap - - - - -	11
Arem oh Liet - - - - -	14
Tepin Kihs - - - - -	16
Koasoaiepen Pahsu - - - - -	19
Wahr Oapwoat Pwilipwil Sekeren Wai - - - - -	23
Ni Mwein Limwehtu - - - - -	26
Mour oh Kepwehn Doadoahk - - - - -	29
Poahsoan en Kaudek - - - - -	31
Deke Idehd - - - - -	34
Satokawai - - - - -	37
Koasoaiepen Nahnsapwe - - - - -	41
Luhk Nahnsapwe oh Wideningar - - - - -	44
Glossary - - - - -	48



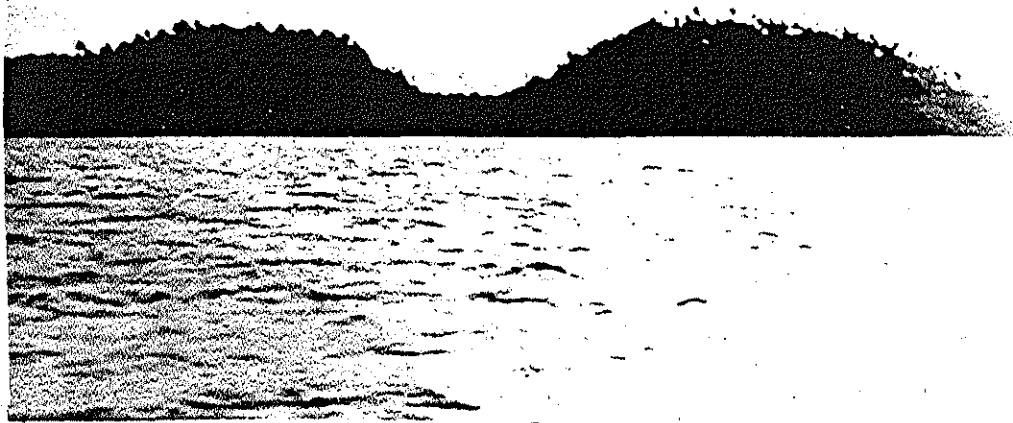
LIKEPSINO

Sahpw ehu mie likin Pohnpei. Mehn mahs oko kin kahdaneki Nanparahs de Sapwen Eir, pwehki e mihmi ni pali eir, Nahmw ehu minte likin sahpwo. Soang wet me adaneki Oarenehnaw de nahmw patehngete sahpwo. Eden nehnaw wet Nemwen Eir. Nan nehnaw wet mie soangen menihke ehu kin mi ie me adaneki Likepsino. E duwehte langon, ahpw e laudsang langor. Mie ah dihdi me duwehte en lih, oh ma kilio pahn ohla, nta kin kereker duwehte ntahn aramas.

Menihke wet ahpw kaparaparehr oh inenen tohtohla mehleh nan nehnawo oh kahrehieng arail pwungidekda pohn piken oaroahr en sahpwo. Ni arail pwungidekda, irail pil kaparapar

oh neitik wiahda kisin seri kei. Tohnsahpwo ahpw diar kisin
seri pwukat pohn piken sahpwo oh pweipweikihda seri pwuko
kohsang ia. Irail eri rikpene kisin seri pwukat, me
neitikidihsang rehn Likepsino, oh apwalihirailda. Iei
seri pwukat me wiahda keinek en Soun Eir oh iei tepin keinek
wet eh miehla.

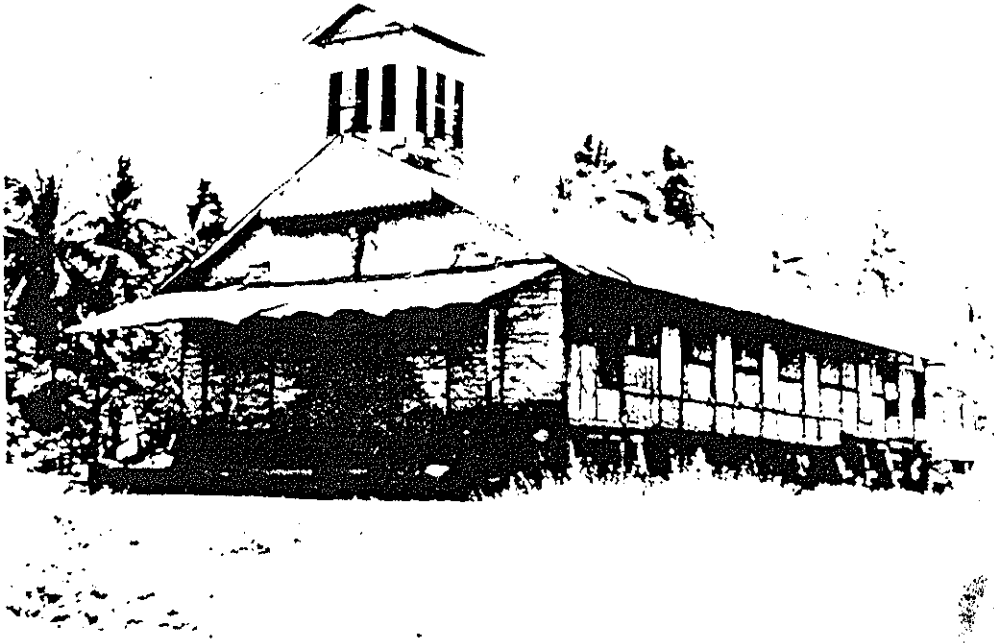




OLAPAHD

Mwein ele Olapahd kodon manaman emen pwe ih me wiahda deke me adaneki Pakihn. Ni ah nekier ah doahken wia sahpw, e medewehda me sahppo sohte nohn mwahu pwe e me imwin pwoht. Olapahd ahpw lemehda en kodohng Pohnpei pwehn wahla eh. dolen Pohnpei kan oh dolehki Pakihn. Ahpw kohdo Pohnpei oh inendohng Sokehs wasa me adaneki Nansokele. E kohdo ale dohl riau, dolen Mallalap oh dolen Nahnsilu, oh wiahkihda koaruk riau. Ahpw pil pirapahla sehu, roawen pwok pwoat, oh iniekihda koaruk riauwo, ih tang. Ni ah tangatang kohla, serehd emen ahpw pihrho pwehn kang sehuwo. Serehdo ahpw kohdo diarada me sehuwo solahr mie. Ahpw idawehnla Olapahd ih diar ah e tapiada kang sehuwo pohn

pwapwen Olapahdo. Ahpw wie kangkang sehuwo oh ansou me ira
lel ni eareahro, likin Palikir, sehuwo ahpw tipw rielep oh
koaruk riauwo pwupwidi likin Sokehs, Palikir. Iei koaruk
riauwo me wiahda sahpu riau me adaneki, Mwahngpeiei oh
Mwahngpailong. Olapahd ahpw kahskiheng serehdo me e sohte
pahn pwurehng kilang, de serehdo sohte pahn pwurehng kohla
ni sapweho, Pakihn. Kahrehda sang mwurin mwo lel rahnwet
sohte serehd kak dierek de mour pohn deke Pakihn. Serehd
akan kin lelete Pakihn oh mehla.



Jack Amusten

Jack Amusten iei emen ohl me keieu mah nan Pohnpei
Ohl menet me paliwar kaselel pwe me kil pwetepwet, pitenmoang
weitahta pikosetik, ririnmas kos, kutohr en mese ekis
pwetepwet oh ngih pahrek.

Jack Amusten pwoudkihda lih pahmen nan eh mour. Emen
rehn lih pwukat me neitik oh wiahda serepein silimen oh
pwutak emen.

Jack Amusten aledier mwahr ekei sang wein Kiti, oh
keimwisengkihla mwar koanoat ehu. Mwahr wet iei Sourukohn
Dierensapw. E pil ndandki eh kasauwodo nahnmwarki Penihdo
reh oh apwahpwalihki nahnmwarki menet ansou reirei.

Jack Amusten me koasoanehdi mwomwohdso Kahdolik nan wein

Kiti. E kihongehr mwomwohdso ekis kisehn sapweo, me we mihmi ni sohpw pahieu. E pil kin apwalih mwahu mwomwohdso wet. E kin pwerisek en iang sarawihn menseng oh soutik. E pil kin pwerisek en wahla rehn pahdire mwenge me leu oh me pil amas ape, ni ansou kan me e kin diar.

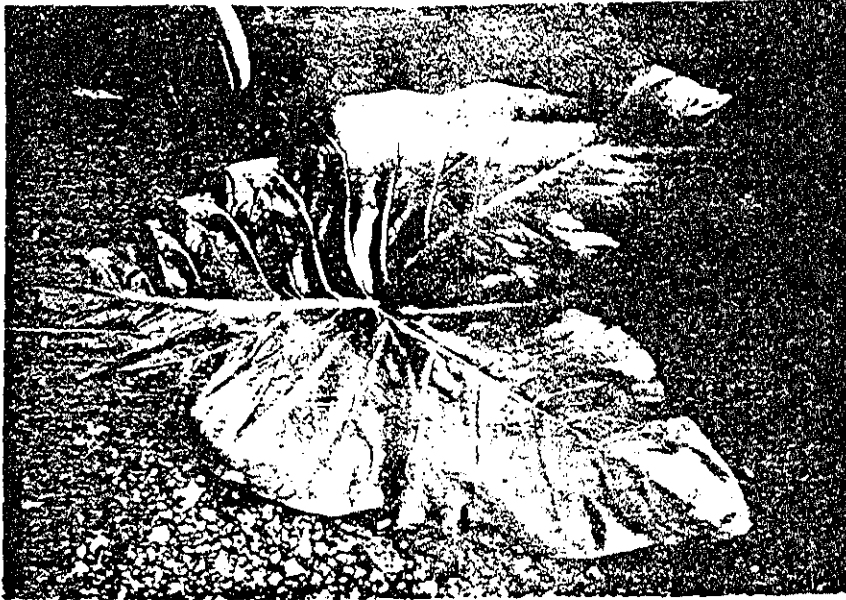
Jack Amusten uhdiahl mwehi pahieu. Mwehi keieu iei mwein Sipein, mwehi keriau iei mwein Sehmen, mwehi kesiluh iei mwein Sapahn oh mwehi kapahieu iei mwein Amerika. Jack Amusten wadawadki mah. E pil uhdiahl dih pahieun nah seri kan.

Jack Amusten iang wadawadki pwerisek nan wein Kiti. Sapweo direkihla nih, kahrehda e pil iang ahneki ten en mwangas nan wein Kiti. Sapwen ohl menet sohte kin dipwidipw, oh e pil direkihla soangen wahnsahpw teikan.

Ohl menet pil inenen pereniki laid, ahpw mehlel soangen laid me re kin nda uhpaup. E pil inenen esehla wasa kan me mwahueng laid wet, oh ansou da me laid wet konehng en wiawi. Ohl menet pil inenen kadek pwe e kolokolete tiahk en kisakis lau ih mehla.

Ni Jack Amusten eh mehla, e sohte alehdi soumwahu eh. Ihte, e wenkihdi nan ihmw eh solahr kak alu. Ni ansou me e kehimwidiero, sohte oapwoat ngih ohla de medekida. Jack wendi nan ihmw ansou mwotomwot, eh mour ahpw imwiseklahr sang ni eh mohngiong eh solahr kak sewese paliwere, ahpw kaidehn sang ni eh soumwahu.

Jack Amusten peptaisla ni eh wiahier ohl emen. Sang
ni eh peptaisla lel ni eh mehla, e sounpar epwuki rieisek
isuh. Ahpw sohte me ese iaht e ipwidi de sounpar depe sang
ni eh ipwidi lel ni eh peptaislao. Padire kan lemeleme me
mwein e sounpar rieisek samwa ni ansou me e peptaislao.



SEIKEP OH SAPERANA

Mahs mahs, mwein ele nan pahr kid isipwiki samwa, mie pwutak riemen kin kousoan Ngetik. Eden emen Seikep ah eden emen Saperana. Ira kin mwahuki werewerekseli pohn ahl akan oh pil pohn piken sahpuw ansou koaros.

Rahn ehu ira ahpw lemehda ira en kolahn laid. Ni ara lelehr nansedo oh tepier wie lalaid, ira ahpw kilangada paret emen oh ira pil kilangada ngenin pareto nansedo. Ira ahpw lemehieng me mwahmw men oh ira tepida pwakih. Ira pwakipwakh ngenin mahno oh e pa tangadahla nansapwo, ah ira kesihnenda oh akamaida nanpwungara, ma iei uhdahn mwahmw de eni.

Ira ahpw lemehieng me eni men.

Seikep ahpw ndahieng Saperans, "Ahki kita sohte kapakap mwohn ata tepida laido. Ih me kahrehieng eni menet nohn pwarosohs." Ira ahpw kapakap oh nek ah ira pil pwurehng laid. Nindokon ara wie lalaid, ira ahpw kilangada kewelik men eh pil iang lalaid pohn ngalangalo oh ira lemehieng me pako men. Ira ahpw lemehda ira en kohla ale neira ketieu me keieu kehlailo. Ira ahpw kohla diar en ohl emen eh ahken kodering, ira wahdo. Ira ahpw wawaih tikitik kohla oh Saperana doakoa keweliko sohte lel, eri mahno pihrdowi. Ira ahpw inenen pwonopwonkihda soangen pako meno eh kak pihro. Seikep ahpw nda, "Ele ata kapakapo sapwung kahrehda eni inenen pwarosohs rahnwet." Ira eri pwur.

Mandahsang rahno ira mwengehn mensengte, ira pil pwurpene. Ira tepin koasoala duwen mwohmw me wiawihengira aio ko. Ira ahpw pil doula oh lemehda ira en wiahda mehkot me kak kahrehiengira en pihr duwehte me ira kilang ko. Ira ahpw wahda nohk kei oh ira kohla darpene tehn mwahng kei oh dehkekipene nohk ko. Ni ara wiadahr ara mehn pihr ko, ira ahpw tepida rapahki tuhke me keieu reirein sahppo, pwe ira en douda oh pihrsang loale.

Ira ahpw diar mahi pwoat, ira douda loale oh onopada ira en pihr. Seikep ahpw ndahieng Saperans, "Ngehi mahs, pwe I pahn pihrweite ngehi pwurodo, ah ke nek pihr kohla pohn deke ko." Saperana sohte pwungki, ahpw ndahieng Seikep,

"Soh, ngehi mahs pwe ke de kohweite sohla pwurodo." Seikep ahpw sapeng, "Eri mwahu, kohwei mahs ahpw tamataman me ke uhdahn pahn pwurodo. Wei! Awih mahs pwe I pahn koulki koul pwoat me pahn sewese omw mehn pihren, pwehn kak pihrwei mwahu. Ke pahn awih pwe kisinieng pahn lau ipido ah I pahn tiak koulo." Iet lokaiahn koulo, Edin pihr, edin pihr, pihr, pihr, pihr, pihr dohwei.

Nindokon ara wie mwomwohd nan tuhkeo, ira ahpw kilengwei kilang tehn tuhke kan ar wie ipihpirengki kisiniengo eh samwodohr. Ni ansou me e lel ni ara tuhkeo, Seikep tiakada eh kisin koulo, ahpw siken Saperana. Saperana ahpw pwupw kohdi nan rahn mahi ko oh wikidekida nan tepin mahio. Seikep ahpw mwadangete doudi. Ni ansou me e doudoukohdio, ^e kin lukuwerih Saperana ahpw kin nda, "Dahkot? Ele mie kisin sukuru me sohte teng kahrehda sompihren sohte kak pihr." Saperana sohte kak sapeng pwe e lipwongmas nan tepin mahio.

Ni ansou me Seikep diarada me Saperana lipwongmaso, ahpw kesehieng pwelmatak powe oh kahrehieng Saperana eh pwourida. Seikep ahpw idek reh, "Ia wasa ke lel ie?" Saperana ahpw sapeng, "I sohte wehwehki eden deke kei me I lel ie ko, ah ih ei pwurodo me ke panginiehdao." Seikep ahpw nda, "Kowe me keieu pai rehta pwe ke kilang wasa tohto." Eri ira kohkchla nansapwo rehn ara peneinei kan.



SAKAUEW P WALLAP

Keilahn aio, mie sakau pwoat irail kin kahdaneki Sakauen Pwallap. Tapio kin mi Pohnpaip, wasa kis me adaneki Nanpereu. Rahn sakau pwoatet inenen ahlap oh reirei pwe e osadahsang sampah oh lel lahng.

Eri ni ansouwo, ohl emen mie, adaneki Souiap ahpw kohdohsang. Iap pwehn rapahkihdo nah mahn emen. Ahpw nedened kohdo pwohn sakawo ah irihrisek pahn pwetenleng. Ohlo ahpw kohdo oh lel rehn ohl me pirapahla nah mahno. Eden ohlo Soumen Kepinpil.

Nindokon Souiap eh kohkohdo, nein Soumen Kepinpil nah seri ko kolahn mwemweit oh tuhweng Souiap. Ira ahpw pwurala ndahieng

samarao me ira tuhweng ohl emen oh ah alis ko me inenen reirei.
E kohdi lel pohn patehn neh ko. Soumen Kepinpil ahpw sapengira
oh nda "Souiap lau, kitail melahr!"

Pwandasang ah Souiap pa pwerisang reh rail, ahpw
pitipitte ndalahng Soumen Kepinpil, "Pwohn sakau." Soum
ahpw sapeng me sohte sakau. Eri Souiap ahpw itondi ah sokono
nan pwehlo oh pwawiekihda kalewen sakau. Ahpw ndahieng Soum,
"Ah da, ih sakauen met?" Soumen Kepinpil ahpw pwuriamweiki
kalewen sakauwo. Ira ahpw keden kalewen sakauwo oh lel wasa
kis mpen Kahmar ira ahpw lopuk ie, oh ira kiheng eden wasao
Pahn Kalo. Ira ahpw pwurodo sukedi kalewen sakauwo wasa
me Soumen Kepinpil umwunla ie nein Souiap nah mahno. Eden wasao
Meredil.

Soumen Kepinpil ahpw pakapeseng rahsin mahno oh ale takai
roang ehu, pirehdi oh koarukieng nan tehn sawa ehu oh pwilikihdi
pohn pehio. Ira wie mwomwohd, koasoakoaso ah koaruko lawedo
lawedekpeseng oh wiahda pil emen mahn kalaimwun. Ahpw
pihrdangsangira, kohdahla nan pillapo oh lel nan koropwung ehu
me mi nanpwungen Nankep oh Nankepin. Eden koropwungo Oarepil.
Ira ahpw idawehnla oh koalalamwahuih mahno kihieisang wasao.

Soumen Kepinpil ahpw ndahieng Souiap en karadahng pohn mahno, eri e dehpa keilahng pahn pehn mahno. En mihte ni tepin peh ko pwe e de kangala. Mahno ahpw pihrkihda Souiap oh kerenieng en pwupwikidieng pohn nahna me adaneki Temwetemwen Sekir. Pehn mahno ahpw loi ni nahnao oh wiahda madap ehu ie. In me kahrehda wasao adaneki Nanmadap. Mahno ahpw pwurehng pihrkihda Souiap oh douluhllahng Iap.





AREM OH LIET

Mehn kawa ko, irail kin kousoan Nan Meir, nan werengen Pohnpei. Ni ansouwo oaroahralap en Pohnpei mihmi ni palikapihn palieir, wasa me adaneki Salapwuk, pwe iei wasa pwukat me wia oaroahr mahso. Seiloak me kin pwarodohsang liki kan, iei wasa kiset me irail kin peidi ie.

Eri ninduwen aramas ah tohtolahr Pohnpei oh ngederalahr mehlei, aramas kaparapar oh wiahdahr soangen mwohmw niau. Ehu soahngo adaneki Arem ah ehu soahngo adaneki Liet. Tepin soang wet eh wekila, e wiawihda ni kisin seri. Lih akan neitik oh naitikiedi kisin serepein kei me kersuwed, mas mwoalukuluk oh

kilinawarail ape me mwomwsuwed. Pohn kilirail kan e poh
pehsehs. Ngih rioapwoat, mwohn awarail, kin sikidihsang
ngihrail teikan. Ni arail kin kekeirnda, kilirail kan kin
winaunla oh irail me pil limweseu oh samin, pweipwei, dangahnga,
oh re sohte kin mwahuki doadoahk.

Ihte me re kin wia, re kin memeihr ninrahn, ah nihpwong
re kin roporop dahme irail pahn kang, Irail kin mwahuki kang
mekkot me amas ansou koaros. Irail me weid oh re sohte iang
ahneki limpoak pwe ekei ansou irail kin kakete kangala arail
pahpa de arail nohno, de pil riarail seri kan. Iei met
kasansalepen arail dangahnga oh weid.

Irail ahpw tapiada kang uduken kidi oh uduken kitik me
amas. Mwuri, irail pil song kemehla arem akan oh pil kang-
irailla. Arem akan ahpw mwakarkidahr Liet akan ar kemelahr Arem
akan oh kahrehieng mahwin nan Pohnpei. Iei met tepin mwehi
suwed nan Pohnpei pwe irail peihpenehr nanpwungarail oh ekeite
kemehla ekei. Arem akan ahpw nantihengete oh kemehlansang
Liet koaros nan Pohnpei.

Arem akan iei me kitail kin nda aramas. Arail lamalam
mie, mwomwerail me mwahu pwe irail me min, kil medendel,
pwerisek en doadoahk oh nsinsonohki dahme re pahn kak mouriki
ansou koaros.



TEPIN KIHS

Tepin menihke wet e ipwidi Pohnpei. Iet e adaneki Lidaudaure. Eri iet duwen eh neitikidi. Lih riemen kin koukousan nan kahp ehu, mi sokelehn piken Iap. Ih wasa kiset me ara kahp mi ie. Eri lih riemenet, emen adaneki Liendilmwahu ah emen adaneki Liendelmwahu. Ira kin kousan wasa riau ni kahpo. Liendilmwahu kin kousan Pohnpaip ah Liendelmwahu kin kousan kepintakailap.

Ehu rahno ira ahpw inoukihda ira en kolahn laid. Ira ahpw sapasapal kohla oh lel ni mall ehu me adaneki Mallen Irair, ira eri koammoal ie. Ira ahpw pahda ara kopwou ehu.

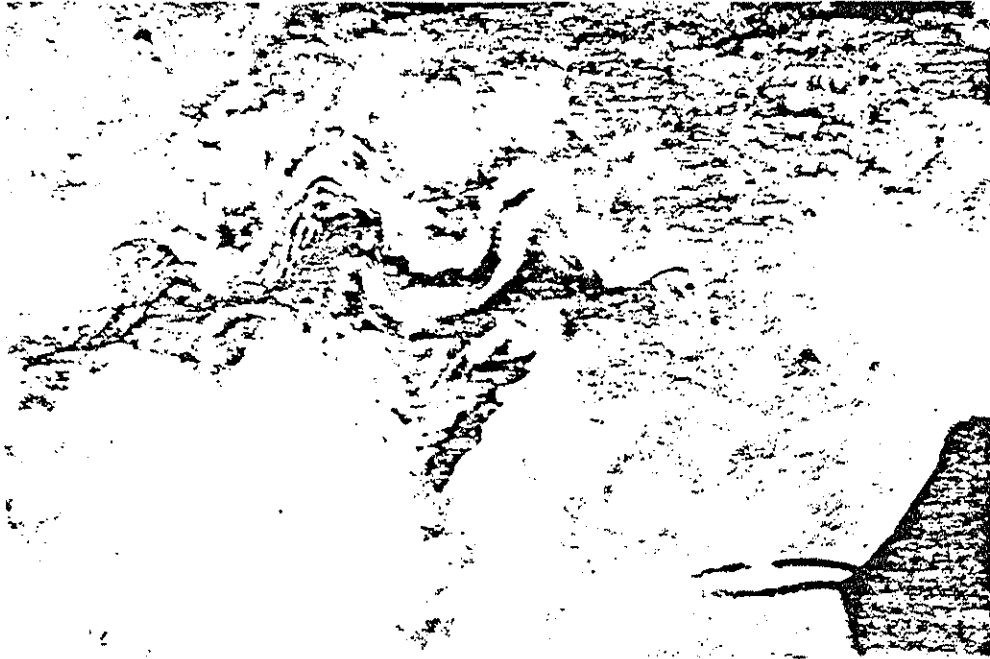
Ira pahkihda pahn kotop pa. Ira ahpw pil mweasel, alialu kohla oh pweridihla ni oaroahr ehu me adaneki oaroahr en Pehtakai, ira ahpw pil koammoal ie. Ira ahpw peidekpene nanpwungara ia wasa ira pahn laid ie. Liendilmwahu ahpw nda, "Apwe ia wasa kis me re kin nda sounahnpaso." Liendelmwahu ahpw sapeng, "Na kitahieng pwe uhet ngalangalehr." Ira ahpw mweasel kohla oh lel ni sou me adaneki sounahnpaso. Ira ahpw tepida sohndi ara kopwouwo. Ira sarekada, soangen mwahmwte riau me lohdi loale. Ehu adaneki pwetarar ah ehu adaneki lipahnkotop. Ira ahpw kapwurehda oh tepida laid pohn ngalangal lau ara kopwouwo dirala. Ira koledi mwahmw, oh soangen menihke kei pil iang. Liendilmwahu ahpw padahkilang mehteio, "Kita pas pwe ata kopwouwet diralahr." Ira ahpw pas oh pil pwuralahte wasa ira kohdo ieo, ni mallen irair. Ira pwilte ara kopwouwo ah pahu ehu pa pwupwidihsang nan kopwouwo, Kisin kihso pa doulahsang loale. E doulahte inenlahng nan kisin lehpwel kis mihte palihlahsang kisin mallo oh pwoalehdi mwahng oapwoat. mwahngo me kiheng ede Lidaudaure. Eri lih oko pil samwalahr nan ara kousoan akan.

Kisin kihso ahpw wie koukousonier wasao oh ih laudla ie. Mwahngo me kamwengehda. Eri pwohng ehu ahpw rotedi de toalidi, oh kotou, nahnsapwe posopos. Kihso ahpw mwekididahsang nan lehpwelo, doudihla oh lel nansedo ahpw pampapdiha oh lel Kataupeidi. Ih wasa kiset me e likeilapala ie. E kin

koukousoan ni imwin sahpw ehu nan paip, pohn oaroahr.

Ahpw mihmi wasao ah mwahnsamwohlo pa pwarodo oh ndahieng en keisang pwe e pahn uhd mi wasao. Kihso ahpw netkihla riapwoat rah ko pwe e masakada mwahmwo. Mwahmwo kangalahte oh pil pwurodo pwe e mwahukiher kangkang rahn kihso.

Kihso ahpw mweasel oh pampapadahdo Pohnpei, oh inendohng Kiti ni deke me adaneki Kiparitik. Ahpw kohdo oh kousoanla wasao oh ih kangala elimoang ehu ie, kahrehda e adanekihla Likotpohnmadau. Ahpw pil mweasel oh douluhldahla lel wasahkis me adaneki timwen takai. Ahpw pil kousoan pohn takai ehu wasao oh ih kangala menihke riau wasao me adaneki pohn koamol oh pelikin Na. Ansou wet e uhd adanekihla Likotimwinsou. Ahpw pil mweasel oh douluhlla daulih Mwahndpeidi oh lel Mwahndpeidak, oh pil kousoanla ie. Ahpw kangala sekirmedel ehu oh met e adanekihla Likotpahniak. Eri ahpw pil mweasel oh ih doudihte kihrdieng nannamw ehu me adaneki Nanmangonoapwoat. Ih wasao me e mihmi ie lel rahnwet. Kahrehda nannamw wet me keieu loal nan Pohnpei oh pil iei met me kahrehda iei uhdahn eden nahmw wet Likot Nannamw.



KOASOAIEPEN PAHSU

Pahsu menihke kesempwal ehu, pwe e pil wia aramas emen. E wia lih dipwilap emen oh ede kan me wekiwekin, pwehki sang ni irair kesempwal akan me e kin wia. Ni ansou me e mihmi nanleng, e adaneki Limwohdenleng. Pahsuwo ahpw kohdihsang nanleng, kodieng Iap. Ni ansouwo e uhd adaneki Liderihiap.

Nindokon eh koukousoan Iap, ahpw naitikihda pwutak riemen. Emen adaneki Dehkon ah emen adaneki Dehman. Ni ansou me pwutak ko laudier, Pahsuwo ahpw ndahiengira, "Kumwa awihie pwe I pahn kolahn rapahki soanetail Pohnpei. Eri ma I pahn kusupada pihl lel lahng, ah kumwa sehngiehdo."

Pahsuwo ahpw mweasel, kohdo sop And. Mwurin ekis ansou e pil douluhsang And, kohdahdo lel nan kepim Parem. Ahpw koukousoan wasao oh ih pidekdihla ni pali kapihn Pohnpei. Ahpw pidipidek kohwei oh lel nan wein Madolenihmw, oh uhdi limwahn kisin deke me adaneki Mall, me rahnwet adaneki Small Island. Iei wasa kiset me e kusupada pihl lel lahng.

Pwutak ko mihte Iap kilang pihl eh kusipekdao ah ira mweasel oh idawehndo ara nohno Pahsuwo. Ira ahpw kadipwodo lipwe ko oh keid wasa koaros me e keid ie. Ira ahpw kohla tuhweng pahsuwo limwahn Mall oh ira eri tiengsang kohdahla lel ni deke me adaneki Pahnmeido. Ira douluhsang met lel Lehiak. Mwurin met ira pil kohdo lel likin Sallong. Ira ahpw papidieng Dolapwail oh kerada ie. Ira kohsang mwo, kohdo Metipw, Edienleng, oh keid pahn sapwen Edienleng. Ira ahpw pwuredihdo Ipwutek. Ira kohsang mwo kohla Alokapw, keidla ni imwin sapwen Doletik, ira eri keredieng nansedo, oh inenlahng Takaieu. Ira keid pohn sou pwoat me adaneki Soupwilliet. Ira kohla, ira eri papidieng Takaieu oh kerada wasahkis me adaneki Lukepensapw. Ira douluhsang wasao oh kolahng Soukurou. Mwuri, ira pil kohla wasahkis me adaneki Paiei, ira ahpw douluhlieieng Dehpehk, oh diar peneinei ehu kin koukousoan Mahilap. Liho adaneki Likaiahia, nah serepeino adaneki Kedinlenguh, oh en Kedinlenguh eh pwoud Sihpwentakai. Pwutak ko ahpw kin kosehieng liho nohno, kahrehda liho pil kin apwalihira mwahu.

Serihn Dehpehk kan, irail kin wie pampap nan leh kei ni imwin Dehpehk. Mie eni men me adaneki Ritingensed ahpw kin kangkangirailla. Rahn ehu Dehkon ih Dehman, ira kohla iang pampap nan leh me adaneki Lehn Tumwe. Ira lel wasao ah enio pa pwarada oh pahn kangirahla. Pwutak ko eri tang kohieilahng ni pahinao ah enio pil pwakihira. Irail ahpw peiandahla pahinao oh lel ni kisin deke Mall, rehn ara nohno pahsuwo. Ira ahpw padahkiheng pahsuwo me eni men pwakipwakihira pwehn kangirahla. Pahsuwo ahpw ndahiengira, irahn doudi oh rukula nan kapehdeo.

Mwurin ansou tikitik, Ritingensed ahpw lella rehn pahsuwo oh idek reh ma sohte pwutak riemen kohdo mwo. Pahsuwo ahpw sapeng oh nda, "Iet ira, pein engedi aleira." Ni ansou me enio engedi oh kainene tepinwereo, pahsuwo ahpw ngidarpene oh kemehla enio.

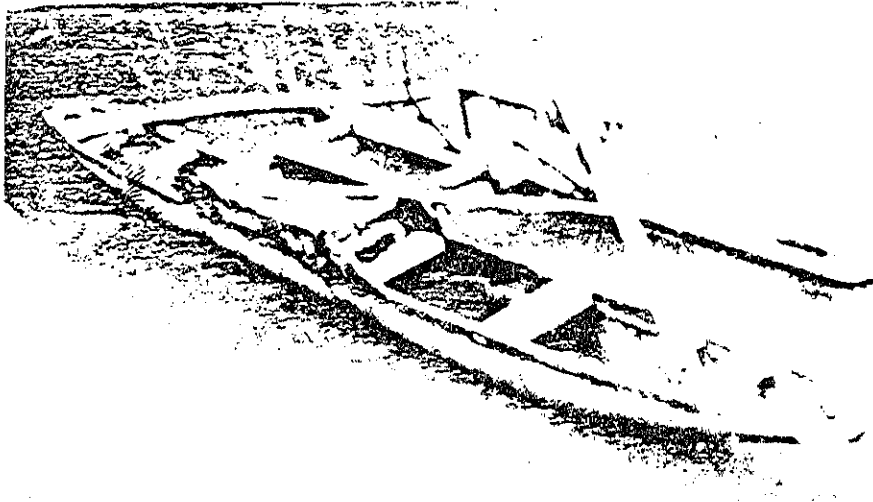
Pwutak riemeno ahpw pwarada oh wahda pahsuwo oh pwurehng keidido wasa me ira tepin keidido ieo. Ira sohpeipene ira ahpw sapehda pahsuwo, iei lipwen pehra ko me mi ni kilin pahsu leloo rahnwet. Ira ahpw rihsada rahnwihra oh rowehkihda kohlong Lehiak. Pilen pahsuwo ahpw keredi oh wiahda pihl pwoat wasao. Ni arail lel Dolapwail, pilen pahsuwo ahpw pil keredi oh wiahda pihl pwoat ie. Pilen pahsuwo pil keredi Metipw oh wiahda pil capwoat pihl. Ni ansou me irail lel pahn sapwen Edienleng, en pwutak ko ara inio pa tipw oh pilen pahsuwo pil keredi wiahda

pihl pwoat. Ira ahpw weliankihda ara inio rahnmeira. Ira ahpw wesikida kohdo oh kohkohieieng Takaieu, wasa me adaneki Lukepensapw, irail ahpw wiahda pihl pwoat ie. Eden pihlo Nemwenleng. Irail wiahda oapwoat pihl Soukurou oh e adaneki Dolepenleng. Irail pil wiahda oapwoat pihl Paiei oh e adaneki Mweseileng. Irail ahpw kohieieng Dehpehk rehn Likaihia.

Tohnsahpw ahpw pokonpene pwe re en wia kaudek, oh pwekimwarehng pohn peneineio iangahki Likaihia. Pahsuwo mwareneki Likendenkahd ah pputak ko, emen mwareneki Oun Mahilap, ah emen Kanikin Mahilap. Likaihia mwareneki Likendinahs.

Ehu rahno irail ahpw pil mwelesang Mahilap, keid pohn mpwen sapwen Dehpehk kohkohieieng ni imwio. Irail ahpw uhd wasa me adaneki Nanmwoale oh wiahda pihl pwoat ie me pil adaneki Mweseileng. Pahsuwo ahpw kohsang wasa oh pwuhrdihla nan limwin sapwen Dehpehk ih peiandahdo oarohro lel nanpwungen Pohnpaip oh Lukop. Pahsuwo ahpw kousoandieng ni ihm takai ehu ni mesenlamo. Wasa kiset pil adaneki Nanmwoale. Kahrehda, Dehpehk mie mwoale riau. Ehu mi nansed, ehu mi nansapw.

Ni ansou me e kousoanier nansedo, ahpw uhd wekisang pahsu oh pwurehng ni aramas, oh iei ih me adanekihla Limwohdeleng. Iei kahrepen menike wet eh neitik, pwehki ih aramas emen.



WAHR OAPWOAT PWILIPWIL SEKEREN WAI

Ni mwein kawao, mie ohl emen me adaneki Sepwkini me wiadahr wahr oapwoat me inenen kalaimwun, ileile oh itarehng wahda aramas tohto. Ih eri darkipene aramas ekei pwe irail en iang ih rapahkihdo kutoareileng dapwaiso. Eri wahro mweselsang Sekeren Wai oh iei wahr pwoatet me wia keieuhn seiloak me kodohng Pohnpei. Kahrepen seiloak wet, pwe irail en rapahkihdo sahpw.

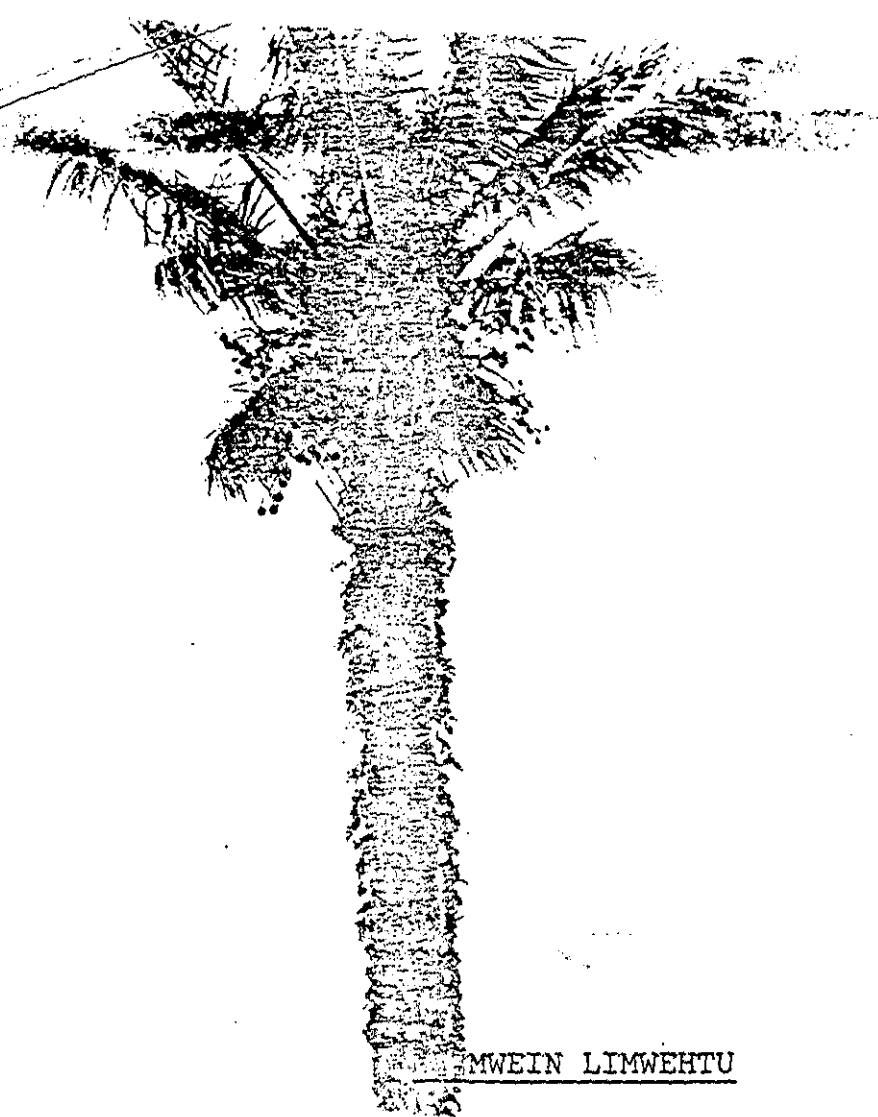
Ni wahro ah mwesel, iet towe kan, Sepwkini, Soupelehdi, Soupelehda, Nipaledakenleng, Perehnuh, Lengperen oh Suhdakono. Eden lih akan, Lisepwkini, Lipalikini, Lidoarokini,

Lipwildakenleng, Limwehtu, Lienkatautik, Lieolele,
Lieremenpwel oh Lisoremenpwel. Iei irail pwukat me dakehdo
wahro. Ekei ederail kan wiahla eden kepwehn wahr pwehki sang ni
kahrepe pwukat: Lisepwkini sepehda wahro oh tuhkehn wahro.
Met wehwehki, ih me sohngada tuhkehn wahro oh lopuk tuhke kan
mwohn wahro ah pahn inou. Lipalikini me pelehdahsang
kanengen wahro. Lidoarokini me wiahda iensemwet. Suhdakono
iei ih me wia kehuhn sereko. Ih me uhda oh kolokolada sereko.
Ni ansou me irail mwesel, irail poad serek oh linge piripir,
kahrehieng sehd mwelehdi duwehte kilahs. Eri met pil wiahda
kahpwal pwe wahro peipeite wasahkis. Sepwkini ahpw eker
Lienkatautik ih Lieolele ira en kohdo kolehng de kiheng engin
iensemweto, oh iei met me wiahla eden wasahkis ni wahr me nda
Ekehk en Ieng.

Ansou me wahro kohkohdo nan madau, irail ahpw tuhweng kihs
men oh Sepwkini ahpw koasoamwoasoamw reh. Kihso ahpw nda
"Keuhs wahr oapwoat?" Ohlo ahpw sapeng, "Ngei Sepwkini me
reperepen sahpwseli. I men komwi en audeie pwe I sehse tiähk
ni mehlel oh pwung ni ei seiloak." Ohlo ahpw idek reh, "Ia
edomw, oh ia wasa ke kin mihmi ie?" Kihso ahpw sapeng, "Ngehi
Lidakeika. I kin mihmi pohn ohio pwoat me uhdahdohsang ni
kepinleng oh leladadohng ni mesen leng." Kihso ahpw kapwaieng
an ohlo ah pekipek oh ndahiengirail, "Kumwail wonowei mwohmwail

pwe kumwail pahn diar ohio pwoat." Iraile eri pil poad serek
oh pwurehng tangatang kohwei. Iraile ahpw diar moaradak ehu
me kisin nahri kis mi powe. Kisin nahrio sohte dihpw mi
powe. Iei wasa pwukat me adaneki Namweias. Ohieh me
adaneki Pohn Namweias. Ah nahrio irail kihong ede Dieren
Sahpw. Iraile lemehda me kisin nahrio pahn mwahueng en
wiahla sahpw, kahrehda rahn me irail lelodohng wasao,
wahro koapwuhroaloatki kisin nahrio.





MWEIN LIMWEHTU

Mwurin pekipek en kapaih me limwehtu wiahier, ni mwomwen kapakap de winahni, soangen mehn mwenge kei pwaradahsang nan pwehl, oh pil ekei tuhke kan wahier. Iei met me irail pil kakehr sewesehki arail mour ansou. Eri ehu ansou, wahr me Limwehtu iangodo mahso pil pwurodo. Irail kodohn kilang duwen doadoahk en sahpo, ma e pweida de soh, oh ia iren lih me mwohndi sile sahpo. Irail ahpw kohdo diarada me sahpo laudpesengier mehlel, oh nein liho seri tohtolahr pohn sahpo. Irail me inenen ngeder mehlel.

Tohnwahro ahpw idek rehn Limwehtu ma e sohte men iangirail pwurala. Liho ahpw sapengirail me e sohte kak, pwe e poakepoake nah kan oh pil nah kan pahn sahnirail. Ansou reireilahr Limwehtu momouriengehr nah kan, pwe dene e pa lau likeilapala oh ediedpeila mehleh. Eri lih menet sohte mehla pwe e pikila oh wiahla kisin menpihr, ahpw kin wie pipihrseli nan wehwe oh lelodo rahnwet.

Eri Limwehtu oh nah kan koaros, irail keinek en Soun Eir, pwe irail kisehn soangen aramas me ipwisang soangen menihke me adaneki "Likepsino," sang nan nehnamw, Nemwen Eir.

Eri mwurin piklahn Limwehtu, iei me wiahda lepin kahs me nda "Dipwinmen." Oh met kasalehiengkitail duwen tepin ehu keinek en Pohnpei kan, Dipwinmen. Ahpw Pohnpei rahnwet, mie keimwin Dipwinmen wekpeseng. Kahrepe wet pwehki ong ni erein ansou, kin mie soangen lamalam de soangen wiewia de pil soangen ansou kesempwal ekei me kin kahrehda wekpeseng oh wiahla ehu ehu keimw.

Kedekedeoh ehu rahn pwopwoud ehu pil wiahde seiloak ehu ong Pohnpei. Iei met me wia seiloak keriau. Eden ohlo Konepwel ah eden liho Likonepwel. Ira pwarodo Pohnpei oh ira pil iang sewese doadoahk en pwehl ni sahppo. Mwurin mwo, sahpw mwamwahula ansou koaros. E kin

wie kohkohda, lalaudla, tehtehlampeseng, oh ilihleilehla
ansou koaros. Tuhke kan pil osadahr sang nan pwehl. Tuhke
tikitik, reh, oh pil soangen tuhke laud teikan.

Mwurin mepwukat ah wiawiher, ohl pahmen pil pwarodo
Pohnpei. Iei met me wia seiloak kesiluh. Iet eden ohl
oko: Pekilap, Pekitik, Sohnlap oh Sohntik. Eri mie
wehwehn eden ohl pwukat. Ederail me wiahla ekei eden
tuhkehn ihmw lel rahnwet. Mwohn seiloak kesiluh, aramas
en Pohnpei kin kousoan pahn mesen takai kan, de pil
karpene dihpw, duwehte pwihk, oh wendi pah pwehki sohte
ihmw. Seiloak kesiluh wahdo mwomwen ihmw ahpw sohte mehn
oasehdi pwe sohte oahs.

Mwurin met seiloak kapahieu pil pwarodo. Ohl emen me
wia. Eden ohlo Meteriap. Ih keinek en Ledek. Iei ih
me kaparahdo oahs oh oasedier mwomwen ihmw me ohl pahmeno
wahdo mwoweo, oh met imwarail kakehr oasidi. Nan erein
ansou pwukat, irail kin kang mwenge amas pwe re sehse
duwen kalewih.

Mwurin ekis ansou, pil emen ohl pwarodo. Iei met seiloak
kelimau. Eden ohlo Misiha. Misiha me pwarodo oh ale tuhke
nioapwoat, idingpene oh wiahda kisiniei. E padahkiengirail
id. Mwurin mwo mehkoaros irail kakehr kalewih. Irail
tepidahr kang mwenge me leu, de inihn ape.



MOUR OH KEPWEHN DOADOAHK KAWAC

Ansou reireilahr oh tunke mahi pii osadahr oh mla. Irah
Iraih ahpw pii diarada me kilin mahi, mehkot me osadahr
kesempwal mehleh pwe iraih kin wiahkihda anaih likouka
iparahi tehi ape. Iraih kin suk kilin mahi kin kinkeahk
palangada oh duwehte pilangkes. Lih akan pii kin likouka
soangwet oh lei met me re kin kahdaneki "likouka" oh
akan kin koal oh ekei ansou iraih kin likouka anaih kin
re kin kahdaneki "dohr" de "lakot."

Piten moangen lih akan kin lema oh lei lema wa re
kin nda "mwelimwel." Piter moangen lih akan iraih kin

sopuwer.

Arail kepwehn doadoahk me sohte mwahu ansouo. Poun lipwei oh pil poun pelik en Na me irail kin kak lopungki mehkot. Poun menihke riau wet me irail kin nda, Pelik. Kahrehda lel rannwet, kitail kin kahdaneki atail mehn koimwangas pelik, pwenki iei soahng riau wet me irail kin kak kohkehki mwangas. Irail pil kin doadoahngki poun pwaih ahpw e pil sohte nohn mwahu pwe e sohte kak lopuk mehkot kekelwak. Irail kin diar poun menihke, sile, oh kiheng mangile. Iei met neirail sile me re kin wouwaseli pohn pwpwerail ansou koaros. Poun ienlam me irail kin wiahkihda neirail silehn pele wahr. Soangen sile wet me irail kin kahdaneki "kih."





POAHSOAN EN KAUDEK

Keilahn aio, mie seiloak ehu pwarodohng Pohnpei. Ohl riemen me kaunda. Eden emen Olisihpa ah eden emen Olosohpa. Ohl riemenet, ira me loalekeng oh pil koahiek en kokohseli nan wasa apwal akan pwe ira kisehn aramas manaman de sarawi kan me kaparaparadahdohsang Kataupeidi. Ira wadahr aramas tohto kei oh dakehda lapalahn wahr oapwoat me kehu mehte pwoat ah serek silipwoat. Soangen wahr pwoatet kin kak wahda aramas epwiki ape. Irail ahpw kohdo pidolongehng nan kisin kepidau kis, oh inenlongehng ni deke laud ehu me mi

limwahn werengen sahpw laud Pohnpei, me adaneki Soupaip,
oh irail wiahda arail kousoan wasao.

Irail ahpw kailikiekipeseng moasoahr en sahpwoki
dakaparail. Mwohn arail pahn mwelesang Katau, irail
doukehng pwehl ni ekis wasa nan wahro. Iei wasakiset me
irail kin poadokedi arail wahntuhke ie de kenerail
kisinmwenge me re pahn kak kang ni arail seiloak.

Ni arail lel Soupaip, irail ahpw uhd kihdi pwehl oko
oh pwelihkihla sahpw.

Irail ahpw kousoandiengehr wasao oh tapiada wia wasahn
arail pwohng de kaudék. Eri e sohte pweida pwe dene me
mwekidikid. Me engimah oh pil ilokin. Irail ahpw kiheng
eden wasao Sokehs. Irail ahpw kasauwada arail doadoahk oh
wahdahla likin Net, pil tapiada arail doadoahk ie. Irail
ahpw pil diarada me mesuwed pwe me pil ilokin oh engimah.
Irail ahpw pil douluhldalahng ni mesenleng. Iei wasa me
re kohla oh diar soanen arail doadoahk ie.

Eri ni ansou me irail kilangehr me soanen arail
doadoahk me mwahu, irail ahpw alehki tohnwein Pohnpei re
en iang seweseirail ni arail pahn wia poahsoan wet.
Tohnpohnpei pil pereniki sewesehkinirail doadoahk wet.

Iet duwen arail tapiada arail doadoahk. Irail kasokehda
poahsoan kei me keimw pahieu. Irail kailikieki takai kei
me per mas limpar oh wenapar. Irail ahpw audehkihla takai

meih kan me re rikodohsang nansed. Irail wiahda wasakiset
ni mwomwen deke kei, oh koasoandie, e wia kahnihmw ehu.
Ni arail wiahda deke pwukat, ekei laudsang ekei. Mie
takai ehu irail kawada nansed, kailodohsang deke ke.
Irail kiheng eden takaio Peirahni. Takai wet e wia mehn
kaweid inen en arail doadoahk. E pil kin kak kasalehieng-
irail iren mesenleng ni pali pahieu. Takai wet kohdi mahs
mwohn arail tapiada arail doadoahk. Mie pil ekis wasa me
irail kaunopada mahs arail wasahn mahwin de wasahn ruk.
Irail kiheng ede Nandouwas de wasahn koapwung en sohpeidi.
Irail wiahda kasokosok laud ehu wasa me irail kahdaneki
Nan Mwoaluhsei. Wen tohtohn deke me irail wiahda wasao,
meh welihsek duah, . ahpw rahnwet pali ngeder en dek
pwukat mihmi naniak, oh solahr sansal.

Deke pwukat koaros, ehu ehu ahnekihte ehu pwukoahn
doadoahk kesempwal. Deke pwukat wia kahnihmw ehu oh mie
madole me wahr kak seiseiseli kapekapelirail. Iei me
wasao adanekihki Madolenihmw. Ni arail wiahier arail
doadoahk, irail kiheng eden pahsoan wet Deleur.



DEKE IDEHD

Idehd iei eden ehu deke me mi Nan Madol. Wasa kiset iei en tohnwasao arail wasahn kaudek pwe iei tehnpas sarawi. Wasa kiset mie soangen mahn emen kin mi nan pwoahr ehu nan dekeo oh iei me irail kin kaudekieng. Mahn menet irail kin kahdaneki Nahnsamwohl de Mwahnsamwohl. Nahnsamwohl, ehu soangen lapwed kamasepwehk.

Eri iet duwen lamalam en arail kaudek. Mwomwen kaudeko me irail kin kiheng Nahnsamwohl ah udahn arail lamalam dokodoke emen eni tohrohr me irail kin kahdaneki Enihlap. Mwomwen waunekiohte me irail kin wiahieng mwahmwo.

Soangen kaudek wet kin wiawi pak ehu nan pahr eh.
met me adaneki Pwong Lapalap. Soangen sarawi wet me
kapoudiahl pwe aramas en Pohnpei tohto kin men iang kilang
oh irail kin waila iang kilang de wauneki sarawi lapalap
wet ni ansou me k kin wiawi.

Samworou lapalap emen me mwareniki Nahlainw me kin
wia sarawio. Pil mie ekei pahnangi me irail kin kahdaneki
Leiapw, iei irail me kin papah samworou lapalapo.

Nan deke Idehd mie pwoahr ehu mi ni pali mesehn wasao.
Iei wasao me Nahnsamwohl kin koukousoan ie. E
koammoarseli pahn dekeo. Ni ansou me e pahn kin pwarada,
e kin kohda oh usireireidahsang nan pwoahro.

Ni kisin dekehute mie wasakis me adaneki Dolen Idehd.
Ileilehn dohl wet mihmi ni piht duau. Dohl wet wiawih-
dahsang ni pehsen kisiniei me kin soasoauh ansou koaros
oh sang ni takai me wia kisiniei. E kohkohda oh laudla,
ileilehla lel rahnwet. Kisiniei wet mehn inimaða mehkot
me pahn wia kaudek, oh pil komourpen Nahnsamwohl. Ohl
emen me kin kohwahki pei sarawi wet de wasahn kaudek
wet. Eden ohlo Nahnmadauen Idehd.

Ansouhn kaudek, aramaste men me kin pidolong nan ihmwo
de nan pei sarawio, Nahlainw. E pahn kin wia mwomwehn

kansonoh ehu. Mwohn kaudek wet ah kin wiawi, Nahnsamwohl kin usireireida nan pwoahro oh mesen lingeringer. Nahlaimw ahpw kin wahda tehte ieu oh pidolongala, mwomwen kansonoh, ahpw kin winahni oh pekimahk pahn Mwahnsamwohl, pwehki duwen wiewia sapwung koaros me e kin wia nan pahr ehu, mwuri e pahn kin pekimangki en kaon teikan ar sapwung, mwuri en aramas koaros arail sapwung me re kin wia nan pahr ehu, ahpw pahn kin kiheng Nahnsamwohl dahme e kin tehtehki pidolongalao.

Nahnsamwohl ahpw pahn kin ale oh sosohredi oh nekidihla nan ah pwoahro pwe e nsenamwahu. Iei met duwen mwomwen kaudek me kin wiewiawi nan pahr koaros keilahn aio pohn deke Idehd.



SATOKAWAI

Lih emen mie kin kousoan Nan Madol Temwen. Nah kisin pwutak kis mie ede Satokawai. E kin inenen perenki laid. Sohte rahn ehu e sohte pahn kohla nansed.

Rahn ehu pwutako ahpw lalaidseli oh ih koledi lapalahn mwahmw men. Iei eden soangen mwahmw menet weliwel. Mwahmw menet e koledihsang wasa me adaneki Mweidin Weliwel. Kisin pwutako kohla diar mwahmw eh seradahr nan mweido, ih koledi wahla rehn eh nohnoh, ira kangala mwahmw. Peneinei wet ahpw

ekilahr tihn mwahmw pahn peilapalap pwe e de kahrehieng-
ira engieng.

Sapwellim kidi men ede Ounimwahtakai ahpw keid wasao
rahn ehu, ih eri nedada pohn tihn mwahmw. Kidio ahpw
sarepada pehio oh iladohng rehn Saudeleur tihn mwahmw.
Ni Saudeleur eh mahsaniher tihn mwahmw, ahpw wiahkidahr
engieng laud ehu oh e tepier keikeidek rehn tohnwasao,
ihs me kangala lapalahn mwahmw menet. Mie me nda me
Satokawai ih eh nohnoh. Mwohnsapwo ahpw soakonedahr
pwutako en wahdo, de rapahkiho, sapwellime ehu pweten
mahlupwuren. Keweriwer wet de soakon wet me inenen
apwalehng kisin pwutako.

Peneinei wet ahpw samwalahr pwe irahn onopada seiloak
wet oh rapahkiha winien alu pahn sed, winien sekehmwopw
oh winien sed pwilipwil. Ira ahpw pidakieki Pohnpei pwon
ara derwinio, lao soahng koaros pwungier.

Pwutako ahpw mweelier oh kehkehlikdieng eh nohnoh en
awih pwe e pahn pwurodo. Pwutako kohdo tepida duhla
Ewenkep, ih alialu kohwei sed marain. Ih kohkohla oh
lel rehn mwahmw men me adaneki Idengensaralap. Mwahmw
menet ahpw kasamwohdo pwutak menet. Pwutako ahpw
ndaahieng Idengensaralap mahsen me Saudeleur keweriwerihkio.
En rapahkiho sapwellime ehu pweten mahlupwuren.

Idengensaralap ahpw ndahieng, "Douluhlwei rehn
Idengensaritik." Ni ansou ma pwutako lel rehn
Idengensaritiko, ahpw idek ma e pwurasangehr rehn me
laudo. Satokawai ahpw sapeng me ei. Pwutako ahpw pil,
padahkihengehr duwen keweriwer wet. Idengensaritik ahpw
kihengehr pwehto rehn pwutako oh ndahieng me e pahn
sewese oh kapwurehla rehn Saudeleur. Idengensaritik ahpw
kihlongehng pwutako oh pwehto nan eweho oh kapwurehdo
Pohnpei. Mwahmwo ahpw tahngahkihte pwutako oh lel
Ewenkep, ih serada ie.

Saudeleur ahpw mwahngiadahr me mie mwahmw men seradahr
Ewenkep. Ahpw kadaralahng aramas en esedohng duwen
mwahmwo. Rohng wet pil lelodongehr en Satokawai eh
nohnoh. Liho ahpw tamanda kehkehlik en nah pwutako.
Liho ahpw kihpene kapwat ekei oh kohla wasa me mwahmwo
serada ieo. Rahno tohnwein Deleuhr unsek pokonpene wasao.
Ni arail lel wasao, irail ahpw kin lipwoare liho en dehr
keido pwe e de kasaute koanoat mwahmwo, ah ekei kin nda
re en dehr kapweiak liho pwe re en kilang dah e kolahn
wia. Liho ahpw kohlahte keiehdi mwahmwo, kamwaramwarehdi,
ih poakihte likin sepen mwahmwo sarapeseng ah Satokawai
lusieilahsang nan ewen mwahmwo. Liho ahpw diapahd
mwahmwo oh nda, "Kohwei wasa ke kohdohsang ie."

Peneineio ahpw walahr pwehto, pwutako erā
peikikidalahng Saudeleur, nda, "Iet sapwellim pwehto."
Ira pwuralahte ni imwara, ira kihpene ara peneinei
koaros oh isikedieng ihmwo pohrail, ihr koaros mehla.
Peneinei wet mehla, sohte emen luhwe lel rahnwet.
Pwehto me mihmihte lel rahnwet, nan keinek en Lipitahn
nan wein Kiti. Koasoai pwoatet me mehlel pwe mie sensela.



KOASOAIEPEN NAHNSAPWE

Rahn ehu Nahnsapwe mwemweitsang nanleng, kodohng sampah, pwe en uhdiah! Pahnkedira. Eri me pil mahsahs pwe Saudeleur mwatiedier. Saudeleur me lemei oh soakon kowahlap. Ahpw salihdier Nahnsapwe oh paudakihdi ni kehndakehn ihmweo pwe en mehla. Eri Nahnsapwe ahpw weriwer lau kerenieng mehla.

Ohl emen mihmi sapweo ahpw rongada Nahnsapwe ah wie weriwer. Ohlo mwareneki Isipahu. Ih pwonopwonkihda wasa me Nahnsapwe kohsang ie, pwe ah wie weriwer Pahnkedira.

Eri ih kohlahn kalelapak, ahpw diarada Nahnsapwe eh selidier oh kereniengehr mehla. Ih eri lapwahda oh ale Nahnsapwe, wahla ni kisin deke kis me irail kiheng ede, Piken Nahnsapwe. Isipahu ahpw pwilikidiengehr Nahnsapwe wasao pwe eh kereniengehr mehla.

Eri weid laud ehu ahpw kohda oh kapehla Nahnsapwe nan madau. Mwahmw men me adaneki sawi me kohdo oh sewese pwe e kerenieng en kihrila. Sawio ahpw sewesewese lau ih pwangadahr oh pil pahn kihrila, ah emen mwahmw me adaneki Dahk, ih me pil kohla uhd sewese Nahnsapwe. Ahpw ale Nahnsapwe oh dingkilahng ehu sahpw, me adaneki Katau.

Eri Nahnsapwe ahpw lelehr Katau, oh idek rehn tohnsahpwo ma solahr luhwen sawi lih momourte. Irail ahpw ndahieng me mehte men me luhwe, ahpw e likeilapalahr. Ih eri ndahiengirail re en wahdo. Irail eri wahdo liho, ede Liapas. Nahnsapwe ahpw idek rehn Liapas "Solahr seri rehmw?" Liho ahpw sapeng ketihtihki, "Soh, maing, pwe I likeilapalahr." Eri Nahnsapwe ahpw ndahieng liho, "Ke pahn wiahda emen seri ohl, pwe en kohla ikihie Pohnpei, pwe I pitidohsang kampei."

Nahnsapwe ahpw padikalahng liho wahn tuhke ieu. Liho eri mwusihrerki oh liseianda, ih eri kiheng eden tukeo karer. Nahnsapwe ahpw sapahlih nanleng. Kedekedo liho

ahpw neitik oh wiahda seri ohl emen oh kiheng ede Isokeleke
Eri serio ahpw kekeirda lau laud. Ih eri kapokonepene
ienge pwutak tohto, ihr eri dakehda wahr ekei, irail
ahpw kin kokohseli nan madau, wie epiep, oh irail diarada
Pohnpei. Irail eri peipeiseli likin Pohnpei lau esehier
tiahk en Pohnpei, irail ahpw pwuralahng nin sapwerailo.

Isokelekel ahpw inoukihda irail en wiahda oapwoat
wahr lauden. Eri ienge kan kin sehse mehnda wahro pwe
Isokelekel sohte kin ndahiengirail dahme e kin lemeleme.
Eri irail ahpw koadoahkihier wahro lau pwohng welpwong,
ah wahro nek.

Irail ahpw mweselier kodohng Pohnpei. Irail meh
silipwiki siliakan silimen. Iei tohtohn aramas me dake
wahro. Irail kohdo lei Pohnpei oh mahwinieng Saudoleur
oh kalewehdi, irail eri sapwenkihla Madolenihme.

Mwurin mwo solahr emen Saudoleur pil pwurehng sepwilada.
Iei kadaudok en Isokelekel me adaneki Dipwin Pahnmei oh
iei sou wet me kin wia nahnmwarki Madolenihmw.



LUHK NAHNSAPWE OH WIDENINGAR

Luhk kin ketiket lahngapap, ah Wideningar kin ketiket Saladak wasa me adaneki Pahnihd pohn pehsen iei. Wasa kiset me sarawi pwe iei wasa me Wideningar memeir ie erein sounpar ngader oh kahrehda e mihla pahn pwehl. Wideningar chl pil manaman emen ih me kahrehda e kouroangki Luhk Nahsapwe.

Ni ansou me Wideningar milahr pahn pwehl, tuhke ketieu ahpw osada powe oh wiahda mwomwen sousou kalaimwun ehu. Wahn ketieu pwukat ahpw kin masamasal oh kin wia kapwat ni mwomwen sousou wet. Wasa kiset mahngidie mihmi lel rahnwet

oh sohte me kin kohla de mwamwahlki pwe e wia wasa sarawi.

Kedekede oh ansou ahpw lelehr pwe Wideningar en ppourida. Luhk me ketidi oh kapwurehda. Iet mwomwen Luhk eh ketido. E sokedieng pohn welin ketieuoobhtipwitipp .Wideningar ahpw rongada oh ih nda, "Ihs kowe me tietiak roangen Luhk?" Luhk sohte sapeng ah e pil pwurehng keusih. Luhk ahpw sapeng mahsanih, "Iei ngehi met." Wideningar ahpw sapeng oh nda, "Da nohn omwi pwandeie, I pa lau likeilapala eh." Ni ansouo Luhk ahpw ketin dikorada takai, tuhke, oh pil dihpw ape. Nindokon mepwukat eh wiewiawi, Wideningar ahpw koasoai, "Uhdi mahs pwe I en keiserehda mahs ata kei ering wet eh." Wideningar ahpw wiadahr keisar wet oh kaunopada mwohn ara pahn seiloak.

Ni ansou me soahng koaros nekier, ira ahpw tapiada ara seiloak. Seiloak wet, Luhk palikir Wideningar oh ira mweselsang Pahnihd. Ira kohdahla Pohnsang oh irongewei kepidau en Dewehten. Mwuri, ira kohdihla ni pihl pwoat Nintok, oh douluhlla Serehpit. Wasa kiset tehn pihto serehla masara ko. Ni ara douluhlsang wasao, Luhk ahpw toutoula oh ira kommoal pohn takai ehu, nan pelien sahpw me adaneki Lukoapoaspeilong, eri peden kahwara ko mihla mwo. Ni ara wie mwomwohd wasao, rahnkoloura pa moahl

mwohn masara ko oh pwupwidi, kikida wasao. Ira ahpw kiheng eden wasao, Nankolou.

Mwurin met ira pil douluhl lel Lukoapoaspeiei, oh kilangada karat oapwoat. Ira eri kiheng eden wasao Nankarat. Mwurin mepwukat, ira pil douluhl lel soulap, ira ahpw irongewei Sounahle. Ira ahpw kapikada wahr oapwoat sang nijuht karat oh ira dakehda, mweasel oh seisei kohwei. Ni ara pirekekdahwei Sampeidak, kisinieng laud ahpw kohda oh kamwawihdi wararao. Ira ahpw papasang wararao, papidieng souh me adaneki Utuhn Rohi. Wararao ahpw wiahla kisin souh kis lel rahnwet. Ni ara lel Utuhn Rohi, ira ahpw dokala ni kisin mwahmw kis me adaneki Ikem, oh ira kiheng eden wasao Ikeme. Ira luwetekihla dokalao, ira eri peilongehng ni mesendauenn Nanpailong, oh ansouwo ira pil inenen toutoula, eri ira kommoal wasao, Ira ahpw kieng eden wasao Imwinaketou.

Ira ahpw rapahkihla dolepen ara keio oh diar wih pwoat, eri ira pwohsuwedki kahrehda ira kiheng eden wasao Likin Pahnwi. Ira ahpw douluhlla oh diar Isou pwoat oh ira ale waho doaloahkihda ara keio. Ira ahpw kieng eden wasao Nan Isou.

Ira ahpw keidiei Pohnseu oh urakadahwei dewen kauraur lel pohn pwelipwel en Soueir. Ira ahpw keikiindi ara Seiserao, oh...

keisarao, oh sipedala wen keio. Kisin mwahmw kis ahpw kohdo oh kang wen keio, eri ira kiheng ede Eringihs.

Ira ahpw kohdahwei sekere Kinakapw, douluhlwei oh kommoal wasa kis pwe ira ngetida. Ira eri kiheng eden wasao Naninget. Ira ahpw pwuhrdihwei lel wasa kis oh kiheng ede Pohn Tehnmei. Ira douluhlsang mwo lel oaroahr en Maslikie, oh pidekdahwei lel Dolapwail. Ira ahpw kommoal oh irongadahwei Sounahleng. Ira ahpw kapikada wahr oapwoat sang ni pein kipar ehu pwe ira en seila Sounahleng. Ira eri kiheng eden wasao Tipwen Kipar. Ira ahpw nannantihn sei oh lel Na oh iei wasa kiset me ira wiahda sakauen Pohnpei ie.

Pwehki ara manaman, Wideningar ale kilin pahn neh ko kihsang oh ira sukedi wiahkihda sakau. Ngilen sukuuko ahpw peidahla nanleng. Tohnnanleng kan ahpw lingankihda tiahk wet oh kadaridi meninkeder Seumereseu pwehn uhkirahdahla. Ohl riemeno ahpw kapwurehla maninkedero. Keriemen en meninkeder, Souwenenleng, ahpw pil pwarodo oh ira iangada kohla leng, pwe ira en wia kaudek.

Ni ara lel nanleng, ira ahpw suk sakauo. Piten sakauo ahpw pwupwidi sampah oh wiahda sakauen Pwallap, Sakauen Nindiar oh pil mehteikan me mie nan deke kan en nan Pacific wet.

GLOSSARY

- audeie - padahkihengie; ndahiengie.
- engedi - doahkidi; kihdi peh nan wasa me karakarahk.
- engieng - lingeringer en sohpeidi.
- ering - mwasang.
- ediedpeila - sohla kak kilang mwahu wasa.
- ienlam - lapalahn pahsu me aramas emen sohte kak wahda.
- iensemwet - serek en wahr.
- ikih - pwaineki mehkot suwed me suwed.
- iniehda - wahda mehkot riau ni tuhke.
- inou - pirehkihdi sahl de kisinpwehl soahng ehu me anahne
en tengpene. (karasepe) Tuhkehn wahr kin inoudé
pwe en teng.
- irong - mi wasa me ileile oh kilangseli wasa kan.
- ohio - wasa me pedeped nanaamwahhpwkereangdduwahte.
wap me kin reirei pahsed.
- oarenehamw - oaroahr karanih nehamw de nahmw mihte
limwahn oaroahr.
- uhkirahdahla - luke aramas; ndahieng aramas en kohla ekis
wasa tohrohr.
- uhdiahla - kilang.

kailikihpeseng - kiheng mehkot ni keile pwe en kak
kalaudepeseng.

kaudek - kapakap; sarawi; pwongih mwohnsapwo.

kahskiheng - nda mehkot ni ngillemei de ngilen
lingeringer.

kampeï - ei kamakamala.

kasaute - kasamine; kiheng mehkot samin.

kapaih - mehkot me pahn kak kahrehdo nsenamwahuen en
alehdi kepwe mwahu de kisin mwenge mwahu ape.

kapikada - soangen manaman me kak wekidala ehu soahng
pwe en wiahla ehu soangen mwohmw tohrohr.

kapoudiahl - mehkot me aramas kin mwahuki kilang.

kadipw - idawehn lihpw; keden lipwen mehkot ; alu nan
mohn lipwen mehkot me tiengier.

kaikeidek - peipeidekseli; idihdekseli rehn aramas.

keilahn aio - mahs; kawao erein ansou ehu me nekier.

keiserehda - wiahda mwanpas en kei.

keusih - peidek ni ngillemei; peidek de lokaia ahpw
ngilen lipwoar.

kehehimwidi - wenkihdi nan ahmw luwet en paliwar de
souwahu.

kehkehlik - soangen audepen koasoai de peneu me emen
uhdahn pahn kin tamataman ni ansou me meh teio
sohte mie.

ketihtihki - nda.

keweriwer - ilek sakon; ilek me apwaleng aramas en
kapwaiada.

keden - kilang wehwehn kadipw.

kih - sile me wiawihsang ni poun ienlam.

kouroangki - meirin nehu; wonohn pahn dihpw ansou rejrei
lao tuhke ape osada powe.

koropwung - tenihr me sohte nohn ileile; kisin tenihr.

kosehieng - ndahieng; lukuwerihki; ekeriki.

koaloalamwahuih - kansenamwahuih; kadeke; wia mehkot me
pahn kahrehieng eh nsenamwahu.

koammoarseli - wiahda dewe pwoahr pahn wasa me ngalangal.

koanoat - kené sohpeidi kisin mwenge.

koapwuhroaloatki - mehkot me kohdo nanpwungen wahr oh dahm.

koaruk - kidimpene mehkot nan tehn tuhke de nan likou ape.

koascoamwoasoamw - wia soangen mwohmw ehu me pahn kak
kasalehda wahu.

kutoameileng -- keidien lahng ong pohn madau; wasa me lahng
oh sehd mwomwen tuhpe ne.